

# POLO INDIA VADODARA

 +91-9427054324

## POLO INDIA

250-51-52/17,GIDC IND  
ESTATE,MAKARPURA,  
VADODARA – 390010  
[pcm@poloindia.in](mailto:pcm@poloindia.in)

## PUJA INDUSTRIES

K1/884/9, GIDC IND  
ESTATE, MAKARPURA,  
VADODARA – 390010  
[mail@pujaindustries.com](mailto:mail@pujaindustries.com)

# ABOUT US

Polo India Is An Well Established Engineering Organization, Primarily Engaged In Custom Manufacturing Of Precision Machined Components And Assemblies.

We Generally Deal With Relatively Small Metallic Parts And Assemblies Weighing A Few Grams To Around 100 Kgs. The Basic Strength Of Polo India Is In Comprehensive Capabilities In The Field Of Manufacturing, Design Recommendation For Manufacturability, Quality Control And Business Management.

The Main Charter Of Polo India Is To Meet Customers' Requirement Of Quality And Schedules. This Is Made Possible Due To Promoters' Familiarity In Using Statistical Process Control. Past Experience Of Promoters In Managing Time Bound Projects Helps In Meeting Schedules. Combining These Factors Along With A Foundation Of Ethical Business Practices Has Enabled Polo India To Establish Credibility As A Reliable Business Partner.

## VISION

Polo India By Design Has Decided To Serve World Leaders In Their Respective Field By Meeting Their Quest For Impeccable Quality At Outstanding Value. If We Can Satisfy Them, Then Polo India Will Not Only Survive But Thrive.

## MISSION

Polo India Vision Is To Be Accomplished Through Ethical Practices. This Is Also To Be Achieved By Taking Along The Employees And Vendors As A Team To The Necessary Higher Level Of Performance To Benefit All.

## NATURE OF PRESENT ACTIVITIES

We Have Been Catering To Multinational And Export Oriented Units In India. The Parts Made For The Above Customers Are Typically Having Tolerances Down To 0.005 To 0.015 Mm Range. The Quantities Are From As Small As 10 To 500 Pieces A Month. These Parts Are Required For Hydraulic/Pneumatic Cylinder Assemblies, Assemblies Of High Precision Machines, Gear Box Assemblies In Automobile Industries, Assemblies For Medical Equipment's, Implants, Robotics, Winding Fixtures For Voice Coils Of Disc Drives, Etc.

Apart From Machining Of Precision Components, We Are Capable Of Undertaking Jobs Involving Product Development, Assembly And Testing. Sub-Assemblies Presently Manufactured At Polo India Go Into Special Purpose Machines, Textile Machines, Packaging Machines Etc.



## POLO INDIA HAS A WELL DEFINED INFRASTRUCTURE OF:



Personnel



Equipment



Manufacturing  
Systems & Quality  
Assurance



Vendor  
Development

Apart From The Promoters, Who Have Extensive Technical And Management Experience, The Quality Assurance And Manufacturing Department Is Staffed By Technically Competent Personnel.

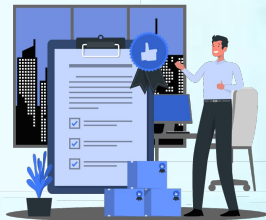
The Operations Are Complemented By Other Adequately Staffed Departments Such As Vendor Development, Materials Management, Marketing, Finance And Administration. Polo India Has Very Well Defined Systems In Place For Procuring The Raw Material, Incoming Inspection, In-Process Inspection, Handling Of Deviations, Finished Goods Inspection And Testing Of Assemblies. Polo India Also Has Comprehensive Systems In Place For Production Planning And Control. These Help Us In Meeting Requirements Of Our Customers As Committed.

# CAPABILITIES

## EXPERTISE

We Have Widened Our Role To Encompass The Various Aspects Of Designing For Manufacturability For Real-Life Components And Assemblies.

We Take An Integrated Approach To Understand Our Clients Requirements And Provide The Best 'value For Money' For Their Equipment. Flexibility Of Manufacturing Processes Is The Key To Our Success. We Estimate The Time And Costs Necessary For Manufacturing The Job On Hand. We Iterate On The Execution Plans From Manufacturability With Cost And Quality



## QUALITY POLICY

Polo India Is Committed To The Goal Of Total Customer Satisfaction. We Will Strive For Continual Improvement In Every Sphere Of Our Activity.

We Will Aim At Understanding And Meeting All Quality Expectations Of Our Customer. This Shall Be Achieved Through Safe And Environmental Friendly Practices Successful Implementation Of This Policy. As A Team, Will Ensure Our Growth And Prosperity.

## QUALITY OBJECTIVE

Top Management Has Ensured That Quality Objectives, Including Those Needed To Meet Requirements For The Product Are Established At Relevant Functions And Levels Within Polo India. The Quality Objectives Are Measurable And Consistent With The Quality Policy.

### THE QUALITY OBJECTIVES ARE DEFINED AS FOLLOWS:



On-Time Delivery



Analysis Of Customer Complaints



Non-Conformance Analysis



Team Activities Monitoring



Planned Improvement For Quality and Productivity



Supplier's Performance Review



Monitoring of Continual Improvement Projects

# CAPABILITIES

## VERSATILITY

We Keep In Touch With The State Of The Art Requirements Of Our Clients And Build-Up Our Expertise Wherever We Do Not Have It.

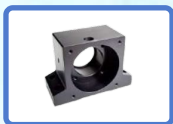
We Are In Tune With The Current Technology, Be It Design Tools, Raw Materials, Machining Tools, Surface Treatment Processes, Test And Measuring Equipment Or Communication With Our Clients.

## RAW MATERIAL MACHINED

We Have Machined Variety Of Raw Materials Like Extruded Aluminum - HE20WP, HE30WP, 6061T6, 6082T6, Cast Aluminum- 5053 24, 25, Stainless Steels Grades Of 200, 300 And 400 Series, Steel Of All Varieties In Cast And Drawn Form, Cast Steel Graded Cast Iron: All Types Of Brass And Brass Alloys: Selective Assorted Non Ferrous Material: MDH, UHMW, PEEK, Delrin: Etc.

## SURFACE TREATMENTS

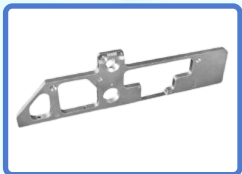
We Undertake Surface Treatments Like Anodizing, Plating, Powder Coating, Electroless Nickel Plating (ENP), Sand Blasting, Etc. We Have A Team Of Vendors Who Specialize In Surface Treatments With Ethical Business Practices, Resulting In Best Quality While Respecting The Delivery Schedules.



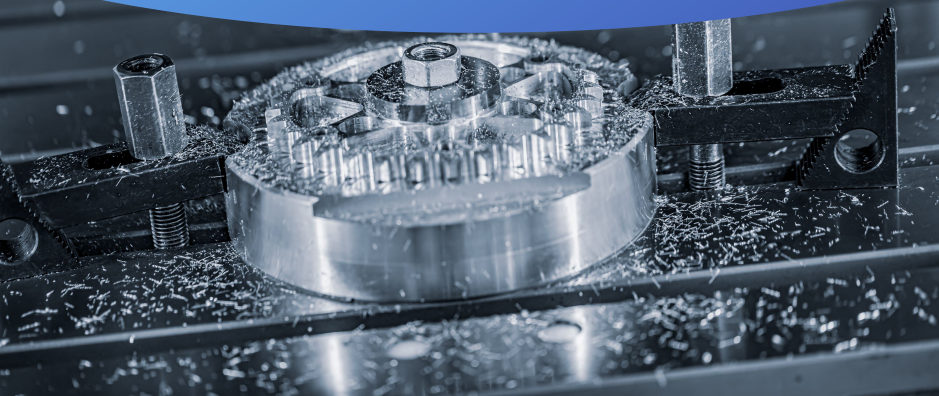
## CUSTOMIZED SOLUTIONS

Our Creative Engineering Is The Foundation Of Our Work And It's A Craft We Work On To Perfect It Daily, We Not Only Look At Several Alternative Solutions To The Design And Manufacturing Processes But Also Search For Equivalent Cost Effective Alternative Raw Material, Casting Used, Cutting Tools And Surface Treatments.

The Focus Of These Solutions Is To Give The Desired Result With Best 'value For Money' To The Customers. We Estimate The Time And Costs Necessary For Manufacturing The Job On Hand. We Iterate On The Execution Plans From Manufacturability With Cost And Quality As The Basis. We Work Out The Jigs And Fixtures To Arrive At The Optimum Product For Our Clients.



# INFRASTRUCTURE



## GLOBAL VMC 1000

Model & Make : Global VMC 1000  
Specification  
LONG TRAVEL - 1000  
CROSS TRAVEL - 600  
VER TRAVEL - 600



## JYOTI VMC PX40

Model & Make : JYOTI PX40  
Specification  
LONG TRAVEL - 760  
CROSS TRAVEL - 810  
VER TRAVEL - 510



## HAAS VMC VF3

Model & Make : Haas VMC VF3  
Specification  
LONG TRAVEL - 1016  
CROSS TRAVEL - 508  
VER TRAVEL - 635



## JYOTI VMC 430-B

Model & Make : JYOTI RX 20  
Specification  
LONG TRAVEL - 400  
CROSS TRAVEL - 300  
VER TRAVEL - 400



## HAAS VMC VF1

Model & Make : Haas VMC VF1  
Specification  
LONG TRAVEL - 508  
CROSS TRAVEL - 406  
VER TRAVEL - 508



## CNC TURNING CENTRE

Model & Make : LMW SmartTurn  
Specification  
MAX TURNING DIA - 200  
TURNING LENGTH - 262  
SWING OVER BED - 200  
ADMIT BETWEEN CENTRE - 345



## CNC TURNING CENTRE

Model & Make : JYOTI DX 200  
Specification  
MAX TURNING DIA - 320  
TURNING LENGTH - 500  
SWING OVER BED - 320  
ADMIT BETWEEN CENTRE - 500



## CONVENTIONAL MACHINES

CONVENTIONAL MILLING,  
CONVENTIONAL LATHE,  
PILLAR DRILLING AND  
VARIETY OF BUFFING AND  
POLISHING EQUIPMENT

# SERVICES

We Have Capability To Understand Customer's Requirement.

We Are Dedicated To Our Components And Assemblies Right Up To Their End Use And To The End Of Their Lives.

We Work Closely To Understand Thoroughly The End Result Expected Out Of Parts/Assemblies We Make.



## PRECISION MANUFACTURING

Flexibility Of Manufacturing Processes Is The Key To Our Success.

We Estimate The Time And Costs Necessary For Manufacturing The Job On Hand. We Iterate On The Execution Plans From Manufacturability With Cost And Quality As The Basis. We Work Out The Jigs And Fixtures To Arrive At The Optimum Product For Our Clients.



## DFMA SUGGESTIONS FOR CLIENTS

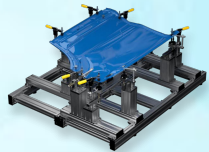
- DFMA Helps To Reduce Cost By Selection Of Alternative Design And Material
- Small Changes In Parts Using DFMA Provides Higher Saving And Reduce Rejection
- Suggestions From Client Are Accepted And We Make Sure To Create Flexibility In Manufacturing During The Transition Stage
- DFMA Changes Suggested As Per The Functionality Of Part
- Discussion With Client's Design Team As Their Previous Experience On The Part
- For Assembly Parts, DFMA Includes A-B-C Analysis And Calculations To Arrive To An Optimum Manufacturing And Assembling Cost
- Dedicated Team Of Engineers At Polo India With Excellent Knowledge And Sound Experience In Design And Manufacturing



## ASSEMBLY FIXTURES

Assembly Fixtures Are Required For Many Applications - Usually To Restrain Detail Parts Or Sub-Assemblies. To Ensure I.C.Y. Repeatability And Consistency Of Build, Jigs Are Either Designed By Our Engineers In-House Or Made To Released Drawings And CAD.

Fixtures Can Either Be Bench-Top, Or Site Levelled And Inspected / Calibrated Using Faro Arms Or Laser Trackers Depending On The Size And The Accuracies Required.



## VENDOR MANAGED INVENTORY

Some Features Of VMI That Polo India Provides :

- Cost Benefits To Customer By Lower Shipping Cos
- Lower On-Hand Inventory
- Ease In Availability Of Parts During Spikes In Customer Orders
- Hassle Free Delivery Of Goods At Clients Place
- Liability Of Customer For 2-3 Months Of Average Monthly Usage



# PRODUCTS

## Circuit Breaker Components

Introducing Our Premium Range Of Circuit Breaker Components, Meticulously Designed To Ensure Safety And Efficiency In Electrical Systems. Our Components Are Engineered From High-Quality Materials For Superior Durability And Performance. They Offer Precise Protection Against Overcurrent And Short Circuit Conditions, Enhancing The Reliability Of Your Electrical Installations. Suitable For A Variety Of Applications, From Industrial To Residential Settings, Our Circuit Breaker Components Are Easy To Install And Maintain, Ensuring Long-Term Operational Stability And Safety.



## DISCONNECTOR COMPONENTS

Explore Our Robust Selection Of Disconnecter Components, Crafted To Provide Secure And Reliable Isolation Of Electrical Circuits. Each Component Is Made From Top-Tier Materials, Ensuring Optimal Durability And Performance. These Disconnecter Components Are Essential For Safe Maintenance And Testing, Offering Easy Operation And Straightforward Integration Into Existing Systems. Ideal For Both Industrial And Residential Applications, Our Products Ensure That Electrical Systems Are Safely De-Energized For Service Or Adjustment.



# PRODUCTS

## CONTACTS

Explore Our Robust Selection Of Disconnecter Components. Crafted To Provide Secure And Reliable Isolation Of Electrical Circuits. Each Component Is Made From Top-Tier Materials, Ensuring Optimal Durability And Performance. These Disconnecter Components Are Essential For Safe Maintenance And Testing, Offering Easy Operation And Straightforward Integration Into Existing Systems. Ideal For Both Industrial And Residential Applications, Our Products Ensure That Electrical Systems Are Safely De-Energized For Service Or Adjustment.



## DEEP DRAWN COMPONENTS COPPER & ALUMINIUM

Discover Our Collection Of Deep Drawn Components, Expertly Crafted Using Advanced Deep Drawing Techniques To Ensure Precision And Durability. These Components Are Formed From High-Quality Metals, Achieving Intricate Shapes And Complex Geometries With Excellent Structural Integrity. Ideal For Applications Requiring High-Strength, Seamless Parts, Our Deep Drawn Components Are Widely Used In Automotive, Aerospace, And Electronics Industries. They Offer Exceptional Resistance To Corrosion And Wear, Ensuring Long-Lasting Performance Under Demanding Conditions.



# PRODUCTS

## LEAF SPRINGS

Introducing Our High-Quality Leaf Springs, Designed For Durability And Performance In Demanding Environments. Manufactured From The Finest Steel Alloys, Our Leaf Springs Offer Exceptional Flexibility And Strength, Ensuring Smooth Rides And Reliable Load Handling In Automotive And Industrial Applications. These Components Are Engineered To Withstand Heavy Use, Reducing Wear And Tear On Vehicles And Machinery. Ideal For Trucks, Trailers, And Railways, Our Leaf Springs Are Crucial For Maintaining Stability And Control.



## DISC SPRING

Explore Our Premium Disc Springs, Engineered For Precision And Resilience Under High Stress And Load Conditions. These Springs Are Crafted From High-Grade Steel To Ensure Optimal Performance And Longevity. Their Unique Conical Shape Allows Them To Compress And Rebound With Controlled Forces, Making Them Ideal For Applications Requiring A High Degree Of Load Cycling Or Space Constraints. Commonly Used In Automotive, Aerospace, And Industrial Machinery, Our Disc Springs Are Designed To Reduce Mechanical Wear And Increase The Lifespan Of Assemblies.



# PRODUCTS

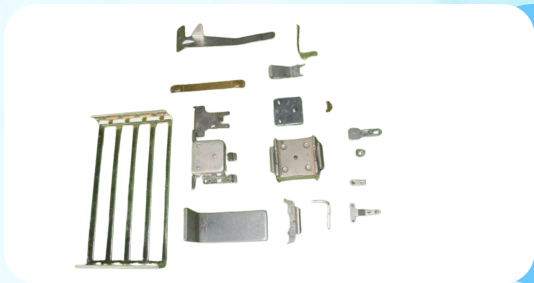
## FLAT SPRING

Discover Our Exceptional Flat Springs, Designed For Versatility And Precision Performance Across Various Applications. Constructed From High-Quality Steel, These Springs Offer Excellent Flexibility And High Fatigue Resistance. Flat Springs Are Essential For Providing Consistent Force And Maintaining Mechanical Movements In Devices Such As Switches, Relays, And Clamps. Their Slim Profile Allows Them To Fit Into Compact Spaces Where Traditional Coiled Springs Cannot, Making Them Ideal For Custom And Space-Constrained Applications.



## RELAY COMPONENTS

Explore Our Comprehensive Range Of Relay Components, Designed To Enhance The Functionality And Reliability Of Your Switching Operations. These Components Are Crafted From Superior Materials To Ensure Optimal Performance And Durability Under Various Conditions. Our Relay Components Include Coils, Contacts, And Other Essential Parts That Work Together To Provide Effective, Responsive Switching Solutions.



# PRODUCTS

## SHEET METAL COMPONENTS

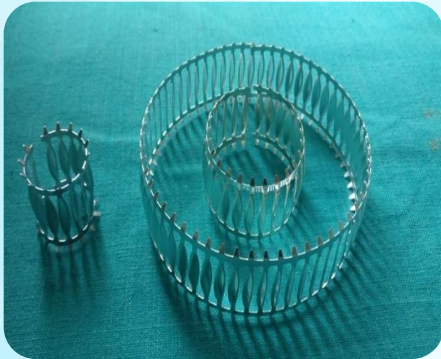
Discover Our Versatile Range Of Sheet Metal Components, Expertly Crafted To Meet The Highest Standards Of Quality And Precision. Manufactured Using Advanced Fabrication Techniques, Our Sheet Metal Parts Are Available In A Variety Of Metals, Including Steel, Aluminum, And Stainless Steel, Catering To A Broad Spectrum Of Industrial Applications. These Components Are Essential For Products Requiring Robust Construction And Precise Dimensions, Such As In Automotive, Aerospace, And Construction Industries. Our Sheet Metal Components Are Designed To Withstand Rigorous Environments, Providing Durability And Strength.



# PRODUCTS

## TORSION CONTACT – COPPER WITH SILVER PLATTING

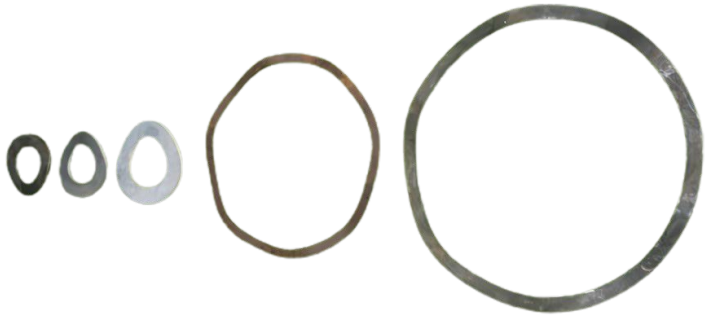
Explore Our Advanced Torsion Contact – Copper With Silver Plating, Designed For Enhanced Conductivity And Corrosion Resistance. Crafted From High-Quality Copper And Finished With A Layer Of Silver Plating, These Contacts Offer Superior Electrical Performance And Durability. The Silver Plating Not Only Increases The Contact's Resistance To Oxidation And Tarnishing But Also Enhances Its Wear Properties, Making It Ideal For High-Frequency Or High-Load Applications.



# PRODUCTS

## WAVE WASHER

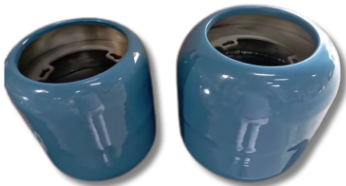
Explore Our Comprehensive Range Of Relay Components, Designed To Enhance The Functionality And Reliability Of Your Switching Operations. These Components Are Crafted From Superior Materials To Ensure Optimal Performance And Durability Under Various Conditions. Our Relay Components Include Coils, Contacts, And Other Essential Parts That Work Together To Provide Effective, Responsive Switching Solutions.



# PRODUCTS

## BUSHING PARTS & SPINNING COMPONENTS

Introducing Our Precision-Engineered Bushing Spinning Solutions, Designed To Ensure Optimal Performance And Durability In Various Applications. Bushing Spinning Involves The Meticulous Shaping And Forming Of Bushings, Which Are Critical Components Used To Reduce Friction And Wear Between Rotating Parts. These Bushings Are Crafted From High-Quality Materials, Including Metals And Polymers, Tailored To Withstand The Demands Of Specific Environments.



# PRODUCTS

## WIRE LAMELLAS

Discover Our Premium Wire Lamellas, Designed For Optimal Performance In Various Electrical And Mechanical Applications. Wire Lamellas Are Thin, Flexible Strips Made From High-Conductivity Materials Such As Copper Or Aluminum, Often Used In Electrical Brushes, Grounding Contacts, And Other Components Requiring Excellent Electrical Transmission And Flexibility.



## ALUMINIUM FLANGE

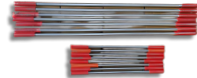
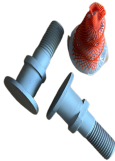
Introducing Our Aluminium Flange, An Essential Component Crafted From High-Quality Aluminum For Exceptional Durability And Performance. Lightweight Yet Robust, This Flange Is Perfect For A Variety Of Piping Applications, Ensuring A Secure And Leak-Proof Connection. Its Corrosion-Resistant Properties Make It An Excellent Choice For Environments Prone To Harsh Conditions, Such As The Petrochemical And Marine Industries.



# PRODUCTS

## THREADED ROD & SPECIAL FASTENERS

Explore Our Range Of Threaded Rod And Bar, Meticulously Designed For Versatility And Strength In A Multitude Of Applications. Crafted From High-Grade Materials Such As Stainless Steel, Carbon Steel, And Alloy Steel, These Rods And Bars Feature Continuous Threading Throughout Their Length, Making Them Ideal For Use In Construction, Manufacturing, And Industrial Environments. Whether Securing Components, Supporting Structures, Or Facilitating Adjustments, Our Threaded Rods And Bars Provide A Reliable And Robust Solution.



## MOVING BLADE & CONTACT JAW

Discover Our Top-Tier Moving Bland & Contact Jaw Components, Designed To Optimize Performance In Electrical Systems. The Moving Bland, Engineered For Flawless Engagement And Disengagement With Fixed Contacts, Ensures Smooth Operation Of Switches And Circuit Breakers. Accompanying It, The Contact Jaw Is Built To Maintain Robust And Secure Connections, Capable Of Handling Mechanical And Thermal Stresses Effectively. Crafted From Durable, Corrosion-Resistant Materials, These Components Guarantee Longevity And Reliability.



# PRODUCTS

## DISCONNECTOR CONTACT

Explore The Reliability And Efficiency Of Our Disconnector Contact. Designed To Provide Secure And Precise Disconnection In Electrical Systems. This Essential Component Is Crafted For Superior Performance, Ensuring A Safe And Effective Isolation Of Circuits. Made From High-Grade, Corrosion-Resistant Materials, Our Disconnector Contact Stands Up To Rigorous Use In Industrial, Commercial, And Utility Applications. It Features A Robust Design That Guarantees Long-Lasting Durability And Consistent Operation, Making It Ideal For Systems That Require Frequent Switching And Isolation Tasks.



## CORONA RING

Introducing Our Corona Ring. Meticulously Designed To Control And Distribute The Electrical Field Gradient And Minimize Corona Discharge In High-Voltage Systems. Crafted From High-Conductivity Materials, This Ring Is Essential For Preventing The Premature Ionization Of The Air That Leads To Power Losses And System Damage. Our Corona Ring Is Robust And Weather-Resistant, Ensuring Durability And Reliability Under Extreme Environmental Conditions.



# PRODUCTS

## COUPLING ROD & END PIECE

Explore Our Coupling Rod & End Piece, Expertly Designed To Deliver Unmatched Precision And Durability In Mechanical Linkages. These Essential Components Are Crafted From High-Strength Materials, Ensuring Robust Performance Under Various Operational Conditions. The Coupling Rod Connects Mechanical Components, Facilitating The Transmission Of Motion And Forces Efficiently, While The End Piece Provides Secure And Stable Attachments At Each Endpoint.



## CT CONDUCTOR & TOP CHAMBER

Introducing Our CT Conductor & Top Chamber, Meticulously Engineered For Superior Performance In Current Transformer Systems. The CT Conductor Ensures Flawless Electrical Conductivity, Facilitating Accurate Current Measurements, While The Top Chamber Optimally Houses And Protects The Conductor, Enhancing Magnetic Flux Distribution. Constructed From Robust Materials, These Components Guarantee Durability And Reliability, Even In Harsh Environments. Ideal For Electrical Substations And Industrial Settings, Our CT Conductor & Top Chamber Are Essential For Precise Current Monitoring And System Safety.



# PRODUCTS

## COPPER CONTACT

Explore Our Copper Contact, Crafted For Unparalleled Conductivity And Durability. Designed For High-Performance Electrical Applications, This Contact Features Premium Copper, Known For Its Excellent Electrical Properties And Resistance To Corrosion. Perfect For Switches, Relays, And Connectors, Our Copper Contact Ensures Consistent, Reliable Electrical Connections And Minimal Voltage Drop. Its Robust Construction Withstands The Rigors Of Frequent Use, Making It An Ideal Choice For Both Industrial And Commercial Environments.



**Thank You For  
Viewing**

**POLO INDIA**

250-51-52/17,GIDC IND  
ESTATE,MAKARPURA,  
VADODARA – 390010  
pcm@poloindia.in

**PUJA INDUSTRIES**

K1/884/9, GIDC IND  
ESTATE, MAKARPURA,  
VADODARA – 390010  
mail@pujaindustries.com



**+91-9427054324**